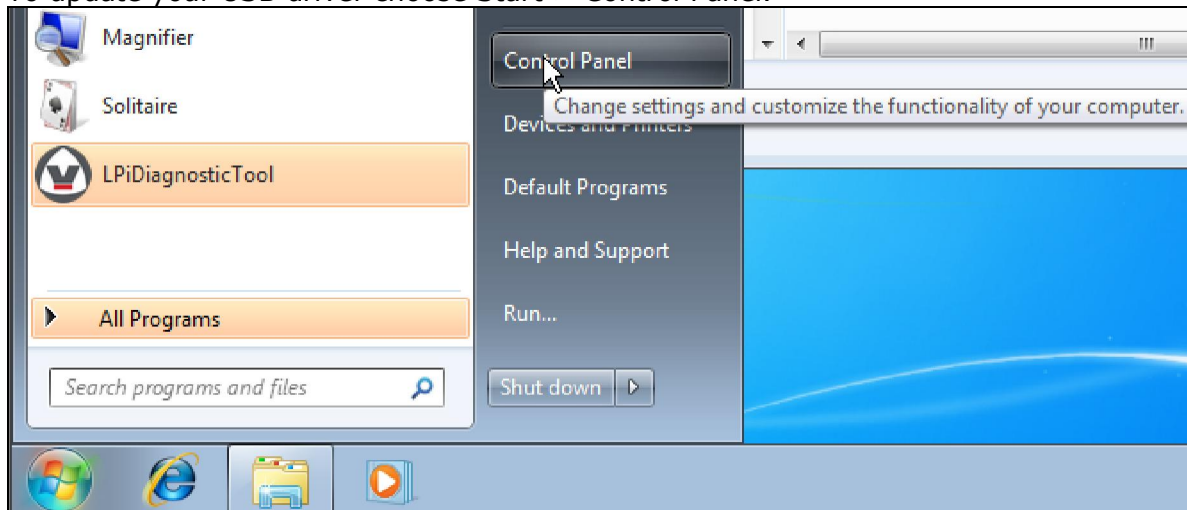
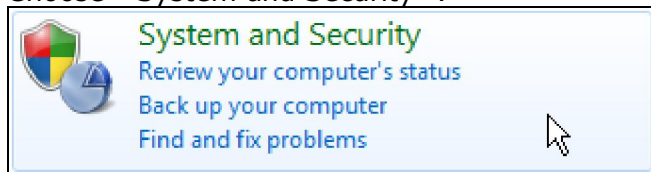


In some cases the **USB<>Serial converter** driver is not installed correctly or an older version of this driver is already running. On this CD the newest drivers are available. In case newer drivers might be available, you can also find them on website URL:
<http://www.ftdichip.com/FTDrivers.htm>

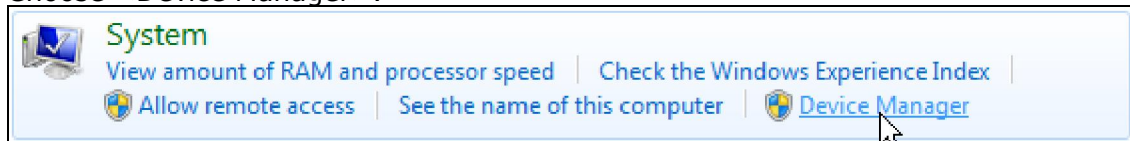
To update your USB driver choose Start > Control Panel.



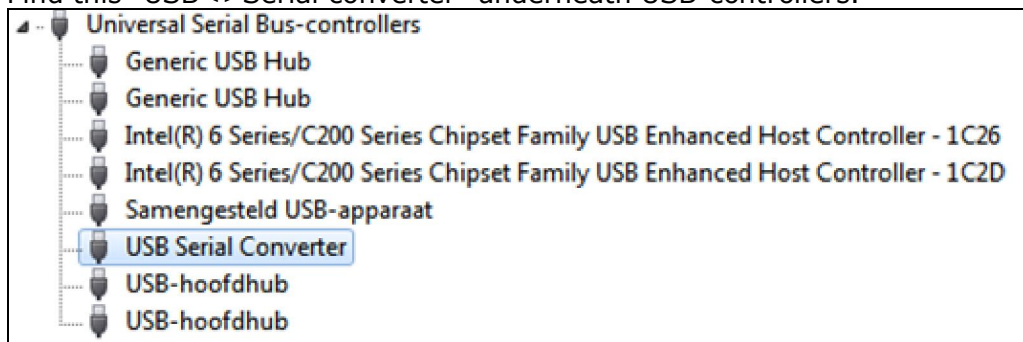
Choose <System and Security>.



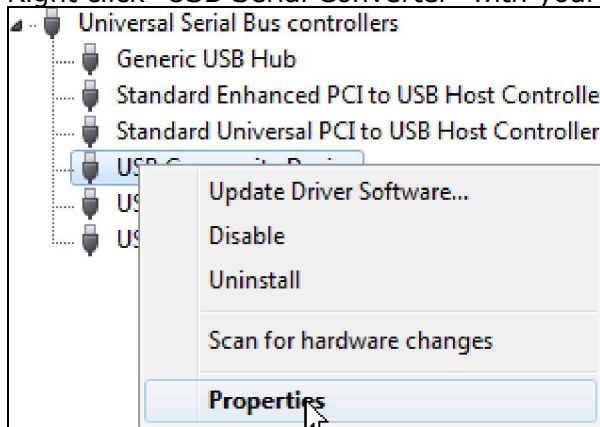
Choose <Device Manager>.



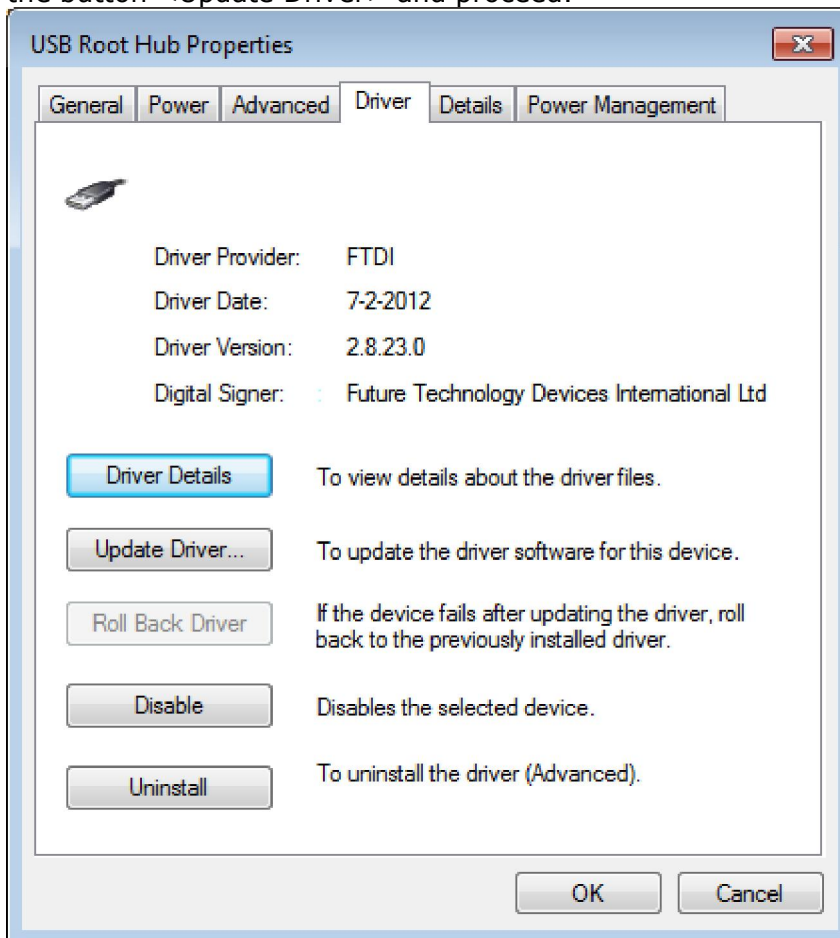
Find this "USB<>Serial converter" underneath USB-controllers.



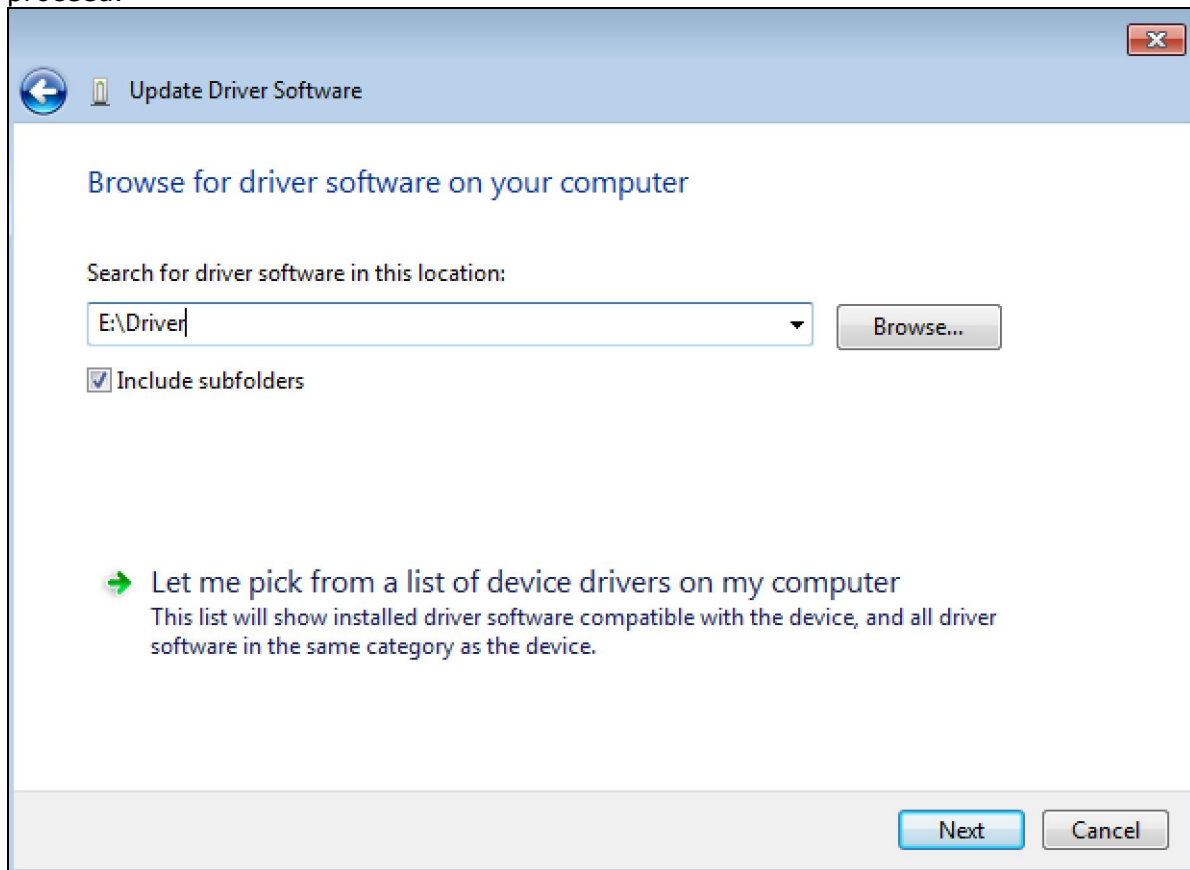
Right click "USB Serial Converter" with your mouse and choose <Properties>.



In TAB "Driver" it will show which driver is used and which version. On this CD you will find the (at the moment of writing this manual) newest USB drivers for updating your installed version to a newer and supported version. In order to install these drivers press the button <Update Driver> and proceed.



Choose the location where you can find the folder <Driver> on your CD, usually the D or E drive, depending on the amount of disk partitions on your computer. Press [Next] to proceed.



After your driver update is completed you will see that the driver version has been updated to version 2.8.23.0. To complete press [OK] and close the screen of Device Manager.

